



VULCAN
HOIST - PALAN

OPERATOR'S MANUAL

NAT – Nova Adjustable Trolley



WARNING

DO NOT INSTALL, USE OR REPAIR THIS EQUIPMENT BEFORE READING THIS MANUAL IN ITS ENTIERETY. FAILURE TO READ AND FOLLOW THE INSTRUCTIONS DESCRIBED IN THIS MANUAL COULD RESULT IN SERIOUS INJURY, DEATH AND/OR MATERIAL DAMAGES

WARNING

All persons involved in using, inspecting, maintaining or repairing this equipment must be thoroughly familiar with the contents of this manual and follow the recommended instructions and procedures to avoid injury or property damage.

WARNING

The equipment described in this manual is not designed to lift or move people nor to lift or move loads over people and must therefore not be used for such applications.

WARNING

Do not use this trolley in areas containing flammable vapors, liquids, gasses or combustible dust or fibers. Do not use this trolley in highly corrosive, abrasive, wet environments or in temperatures below -10°C or above 50°C .

NOTICE

Please visit Vulcan's website www.vulcanhoist.com for the latest manual version or any other questions regarding the equipment.

Safety and Warnings

Dangerous Practices to be Avoided
DO NOT use the trolley before reading the manual
DO NOT let an unqualified person use or repair the trolley
DO NOT exceed the rated capacity of the trolley
DO NOT use the trolley to grab, secure or lift the load
DO NOT use as a “below-the-hook” lifting device
DO NOT install trolley on beams of unknown capacity
DO NOT use the trolley in temperatures below -10°C or above 50°C
DO NOT use a damaged or malfunctioning trolley
DO NOT lift people nor carry loads over people
DO NOT stay in the “fall zone” when lifting a load
DO NOT lift if the trolley is not firmly tightened and adjusted on the beam width with the necessary clearance
DO NOT lift unbalanced loads or loads that are not centered
DO NOT leave the load supported by the trolley unattended
DO NOT shock load or side load
DO NOT allow the load to swing
DO NOT allow a welding electrode to touch the beam trolley
DO NOT use the trolley as ground for welding
DO NOT remove or obscure labels
DO NOT use if nameplate or safety and warning labels are missing or illegible

WARNING

DO NOT use the trolley to grab, secure or lift the load. The trolley is not designed as a “below-the-hook” lifting device and must not be used as one.

Use the trolley to attach or suspend a load underneath a fixed, stationary and rated for that purpose beam.

WARNING

DO NOT attempt to modify this equipment or use it in a manner different than described in this manual. Use only Vulcan authorized replacement parts in the service and maintenance of this equipment. Failure to comply with the above limitations will void the warranty and may result in property damage, injury or death.

Installation and Operation

Operation Procedures	
1	Prior to lifting, make sure the lift can be performed safely and the lift path is clear
2	Ensure the beam is of suitable capacity for the load and will not be damaged by the trolley rolling on the flange
3	Measure the beam width and use only if it is compatible with the selected trolley
4	Make sure the beam is fitted with stops at both ends to prevent the trolley from rolling off
5	Loosen the lock nut (10) and adjust trolley with handle (12) to the desired width over the beam flange
6	Adjust trolley width to the beam width using the handle (12) while maintaining a total clearance of 1/8" - 3/16" between the wheel flanges and the beam flange
7	Tighten the lock nut (10) firmly
8	Verify that all other lifting devices are properly fastened
9	While performing the lift, do not let people to stay in or cross the "fall zone" under the trolley
10	Keep trolley parts clean and lubricated to protect against rust

Inspection

ATTENTION

The trolley must be inspected by the operator daily. If any deficiencies are noted, stop using the trolley until it is repaired or replaced.

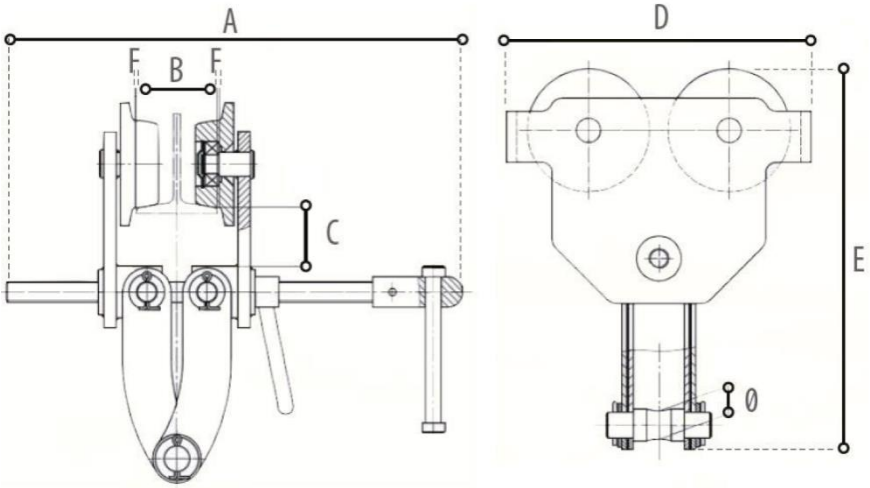
Daily Inspection

1	Check for cracks or distortions in the structural frame, welds or mechanical components
2	Check for loose or missing fasteners or other components
3	Verify the lock nut (10) is firmly tightened and the thread is clean, lubricated and straight
4	Check if trolley rolls smoothly
5	Check for signs of heat damage or weld splatter
6	Check for excessive wear on load bearing parts like, but not limited to the wheels, the suspension pin, the thread, etc.
7	Make sure the nameplate and the warning labels are present and legible

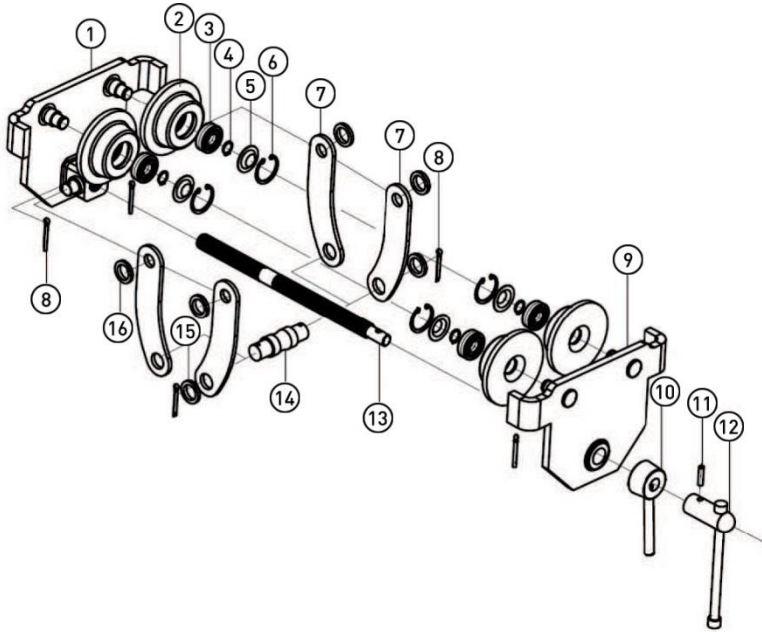
ATTENTION

A qualified person must inspect regularly and in depth the trolley and its components to ensure the equipment is safe for use. These inspections may vary in frequency and detail according to the intensity of the equipment use but must include at least the daily inspection procedure.

The client is responsible for keeping dated records of all periodic inspections and maintenance procedures as means of continuously monitoring the condition of the equipment.



Model	NAT1T	NAT2T	NAT3T	NAT5T	NAT10T
WLL (lbs)	2200	4400	6600	11000	22000
Beam width (in)	2.52 7.99	2.99 7.99	2.99 7.99	3.94 12.01	5.91 12.01
Min. beam radius of curvature (in)	39.4	43.3	51.2	78.8	118.1
A (in)	13.98	14.17	14.17	18.50	18.90
B (in)	2.52 7.99	2.99 7.99	2.99 7.99	3.94 12.01	5.91 12.01
C (in)	1.81	2.17	2.44	2.80	2.80
D (in)	9.53	11.06	12.91	14.84	17.91
E (in)	11.69	12.52	13.82	17.91	19.69
F (in)	.12	.12	.12	.18	.18
Ø (in)	.87	.87	.94	1.10	1.65
Weight (lbs)	18	44	73	132	-



Item	Description EN	Description FR	Qty
1	Right guide plate	Plaque de guidage, droite	1
2	Wheel	Roue	4
3	Wheel bearing	Roulement de roue	4
4	Retaining ring, ext.	Anneau de retenue, ext.	4
5	Bearing cover	Couvercle de roulement	4
6	Retaining ring, int.	Anneau de retenue, int.	4
7	Side plate	Plaque de côté	4
8	Cotter pin	Goupille fendue	6
9	Left guide plate	Plaque de guidage, gauche	1
10	Lock nut	Contre-écrou	1
11	Pin	Goupille cylindrique	1
12	Handle assembly	Assemblage de la poignée	1
13	Equalizer pin	Axe de balancier horizontal	1
14	Suspension pin	Goupille de suspension	1
15	Small spacer washer	Petite rondelle d'espacement	2
16	Spacer washer	Rondelle d'espacement	4

BEAM CLAMP

Beam
Clamp
(NBC)

1T to 10T



* Nova lifting clamps and beam clamp have a 1-year warranty.

NOVA LIFTING CLAMPS

CDE Vertical
Clamp
(NVC)
0.8T to 5T



Lifting Clamp
(NLC)
1T to 5T



Universal Clamp
(NUC)
0.8T to 5T



Horizontal
Plate Clamp
(NHJ)
1T to 2T



Horizontal
Plate Clamp
(NHP)
0.75T to 2T



Drum Lifter
(NDL)
1T



SUPER LIFTING CLAMPS

Screw Cam
Clamp (SCC)
0.5T to 3T



Screw Cam Clamp
Double Eye (SDC-S)
0.5T to 5T



Srew Cam Clamp with
Universal Shackle (SUC)
0.5T to 3T



Lateral Lifting
Clamp (HLC-H)
1T to 6T



Vertical Lifting
Clamp (SVC-H)
0.5T to 5T



Vertical Lifting Clamp
with Universal Link
(SVC-E)
0.5T to 2T



Vertical Lifting Clamp
with Remote Control
Liver and Rope
(SVC-L)
0.5T to 3T



Vertical Lifting Clamp
with Stopper
(SVC)
1T to 5T



* Super lifting clamps have a 2-year warranty.

HOOKS

Hook (STD)



0.25 to 1T



1.5T



2T to 3T



5T



10T

Self-locking
hook (SLH)



0.25 to 1.5T



2T to 3T



5T

Eye hook
(WIU)



0.25T to 5T

CHAIN IN BULK



Many options available at vulcanhoist.com