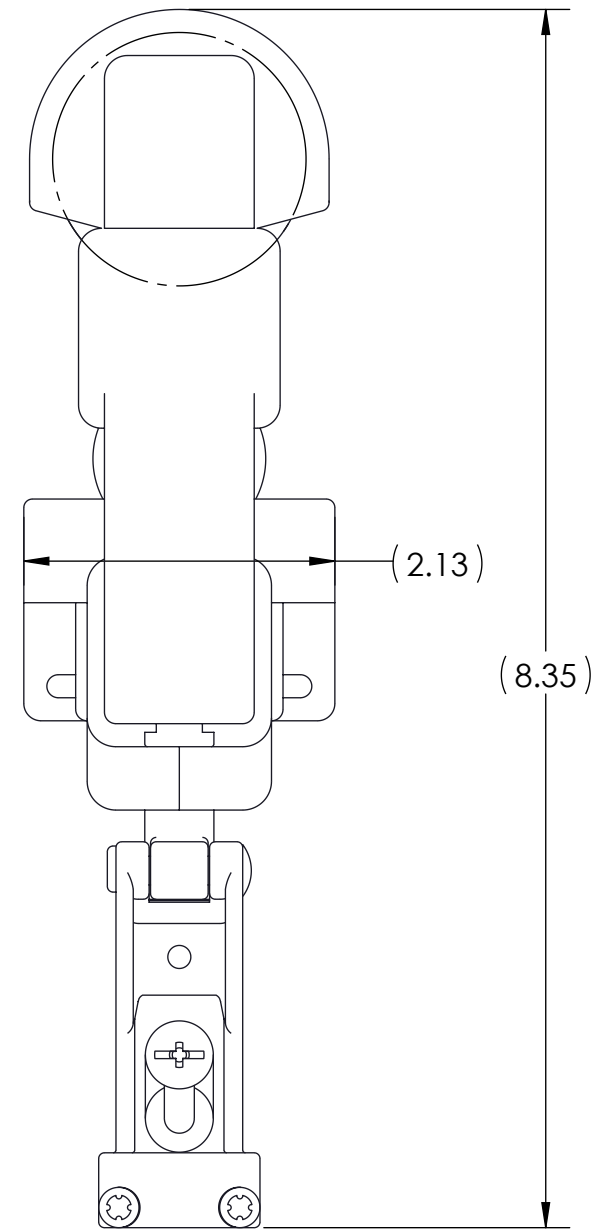
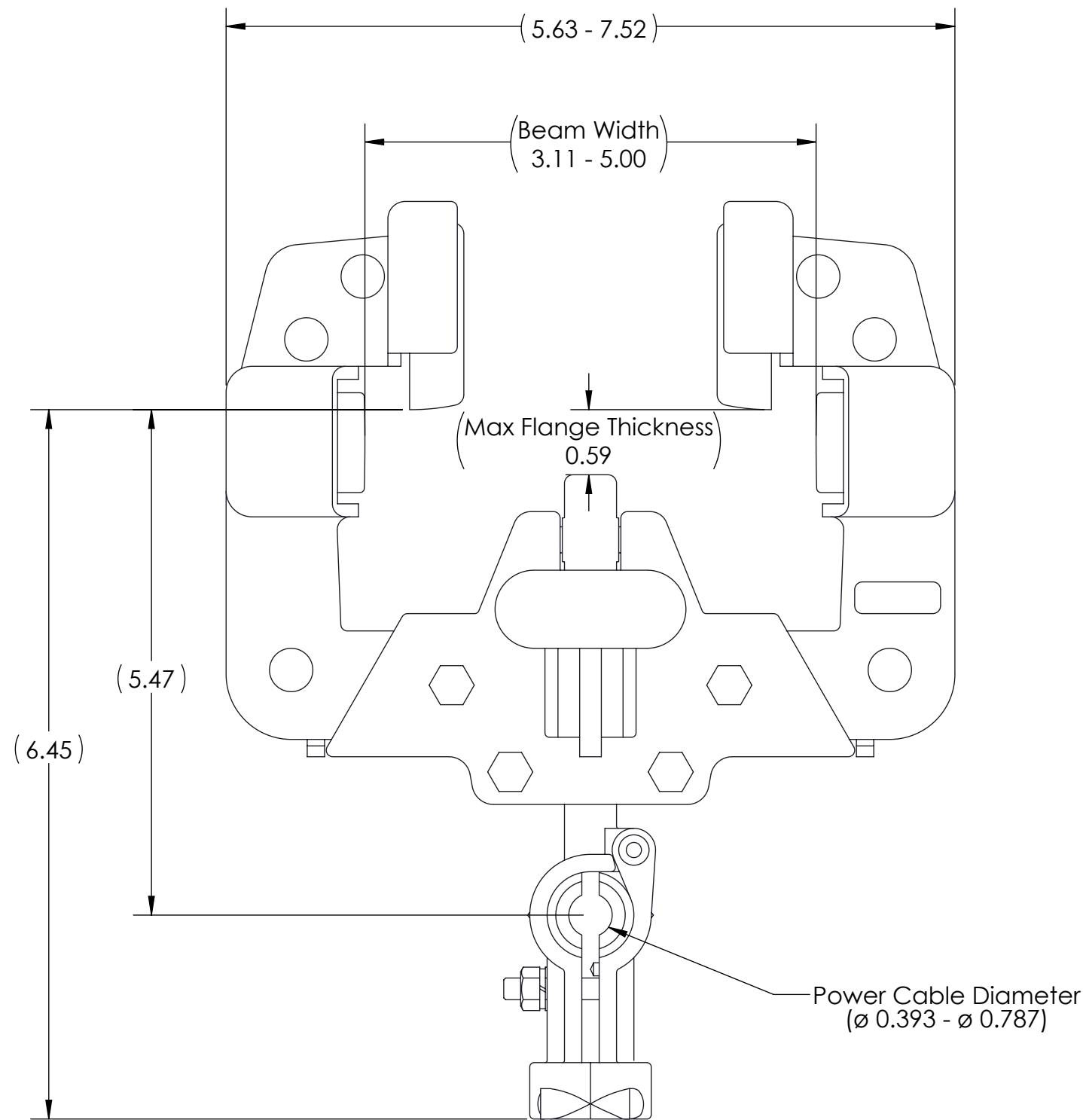




MAX SUSPENSION LOAD = 15.4LB
 MAX TRAVELLING SPEED = 65FT/MIN
 TROLLEY INSTALLATION INTERVAL = 5FT

MIN BEAM CURVE RADIUS* = 59IN
 *ONLY WITH BEAM WIDTH FROM 3.11IN TO 4.09IN



		VULCAN HOIST - PALAN 3435 CREMAZIE E. MONTREAL, QC H1Z 2J2 T. 514-728-4527 F. 514-374-4231 INFO@VULCANHOIST.COM WWW.VULCANHOIST.COM			
		PROJECT/PROJET			
TITLE/TITRE					
FESTOON BEAM TROLLEY					
SIZE/TAILLE	DRAWING NUMBER/NUMÉRO DE DESSIN				REV
B	ALIFESTOON-TR101				A
MATERIAL/MATÉRIEL		TOLERANCES			
		FRACTION	±1/64"	.X	±.02
		ANGLE	±.5°	.XX	±.01
		X	±.05	.XXX	±.005
		DRAWN BY DESSINÉ PAR	JF VALIN		
PROJECTION					
UNITS UNITÉS		IN/PO			
		INSPECTED BY INSPECTÉ PAR			
		APPROVED BY APPROUVÉ PAR			
THE INFORMATION CONTAINED IN THIS DRAWING IS THE SOLE PROPERTY OF VULCAN HOIST. ANY REPRODUCTION IN PART OR AS A WHOLE WITHOUT THE WRITTEN PERMISSION OF VULCAN HOIST IS PROHIBITED. L'INFORMATION SUR CE DESSIN EST LA PROPRIÉTÉ EXCLUSIVE DE VULCAN HOIST - PALAN. TOUTE REPRODUCTION DU DESSIN EN PARTIE OU DANS SON ENSEMBLE SANS LA PERMISSION ÉCRITE DE VULCAN HOIST - PALAN EST INTERDITE.					
DATE: 2022-06-10		SCALE/ÉCHELLE:		PAGE: 1 / 3	

4

3

2

1

4

3

2

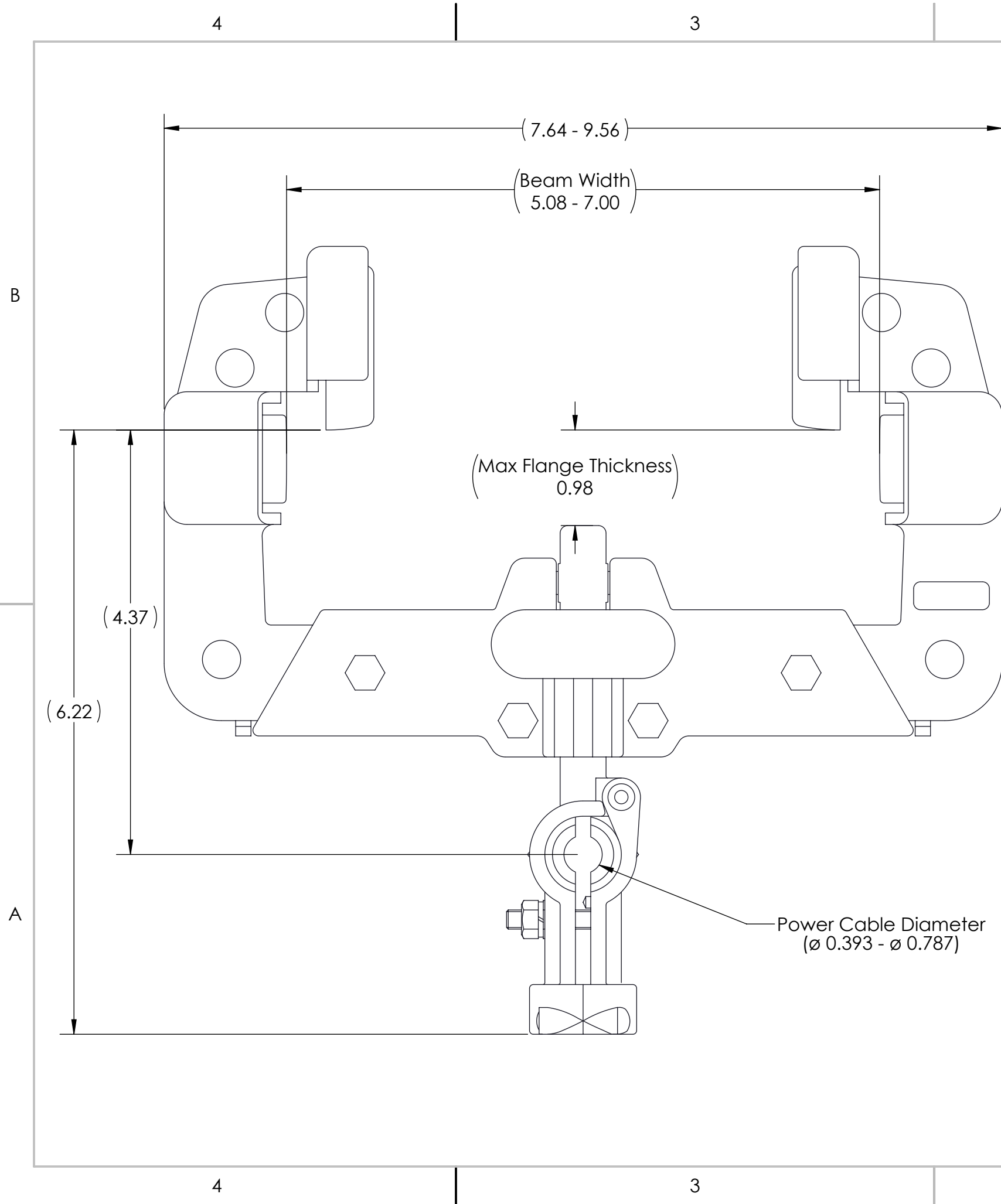
1

B

B

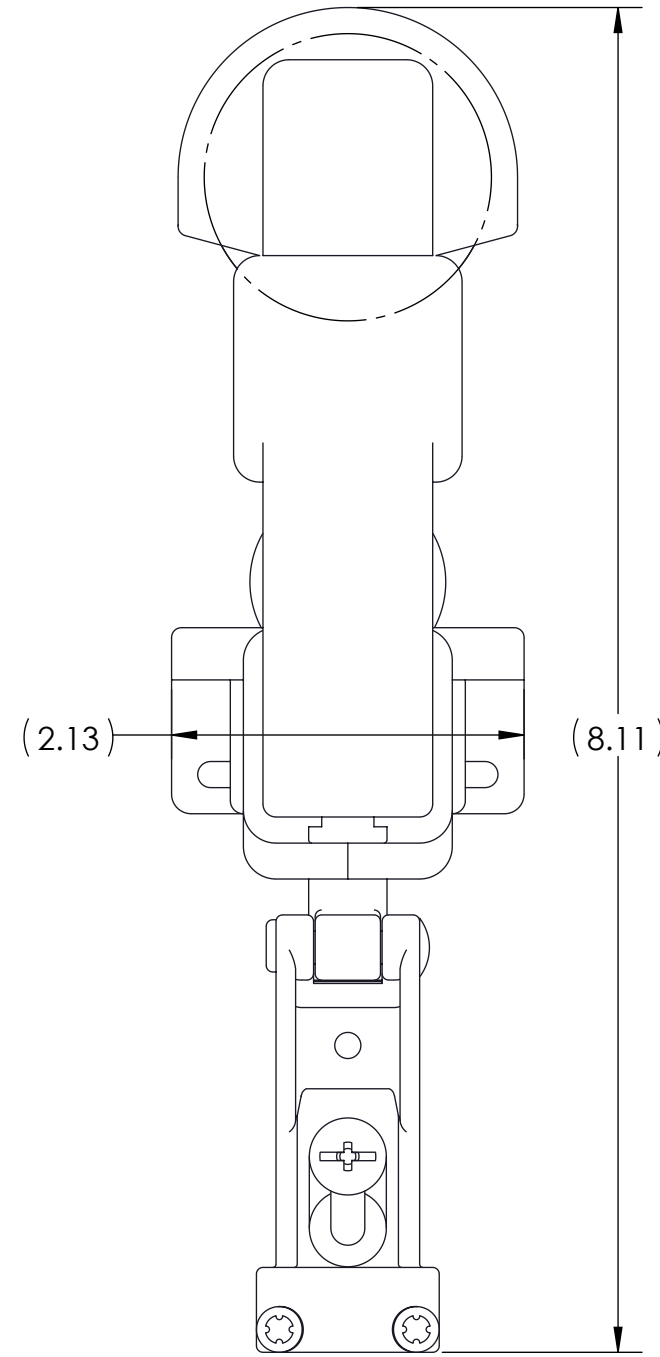
A



A



MAX SUSPENSION LOAD = 15.4LB
 MAX TRAVELLING SPEED = 65FT/MIN
 TROLLEY INSTALLATION INTERVAL = 5FT

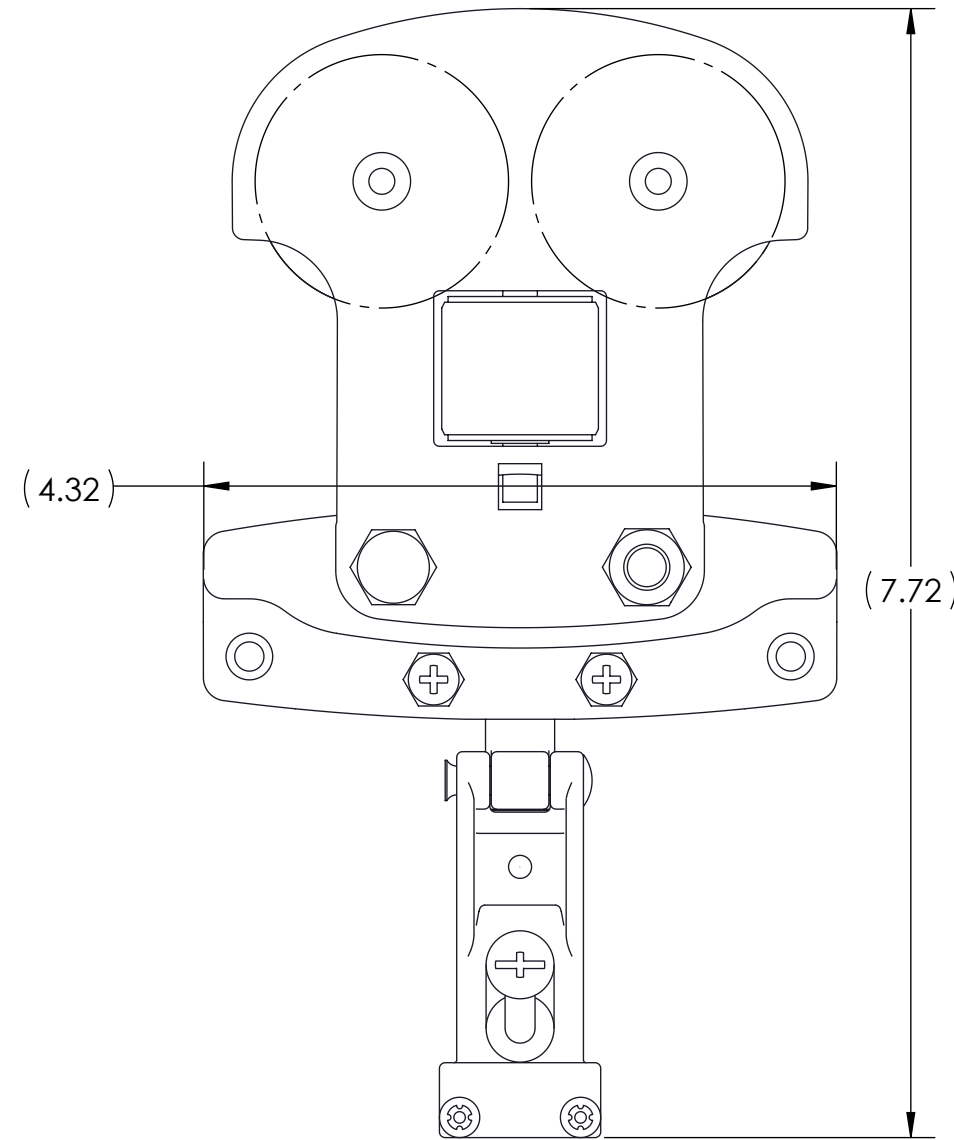
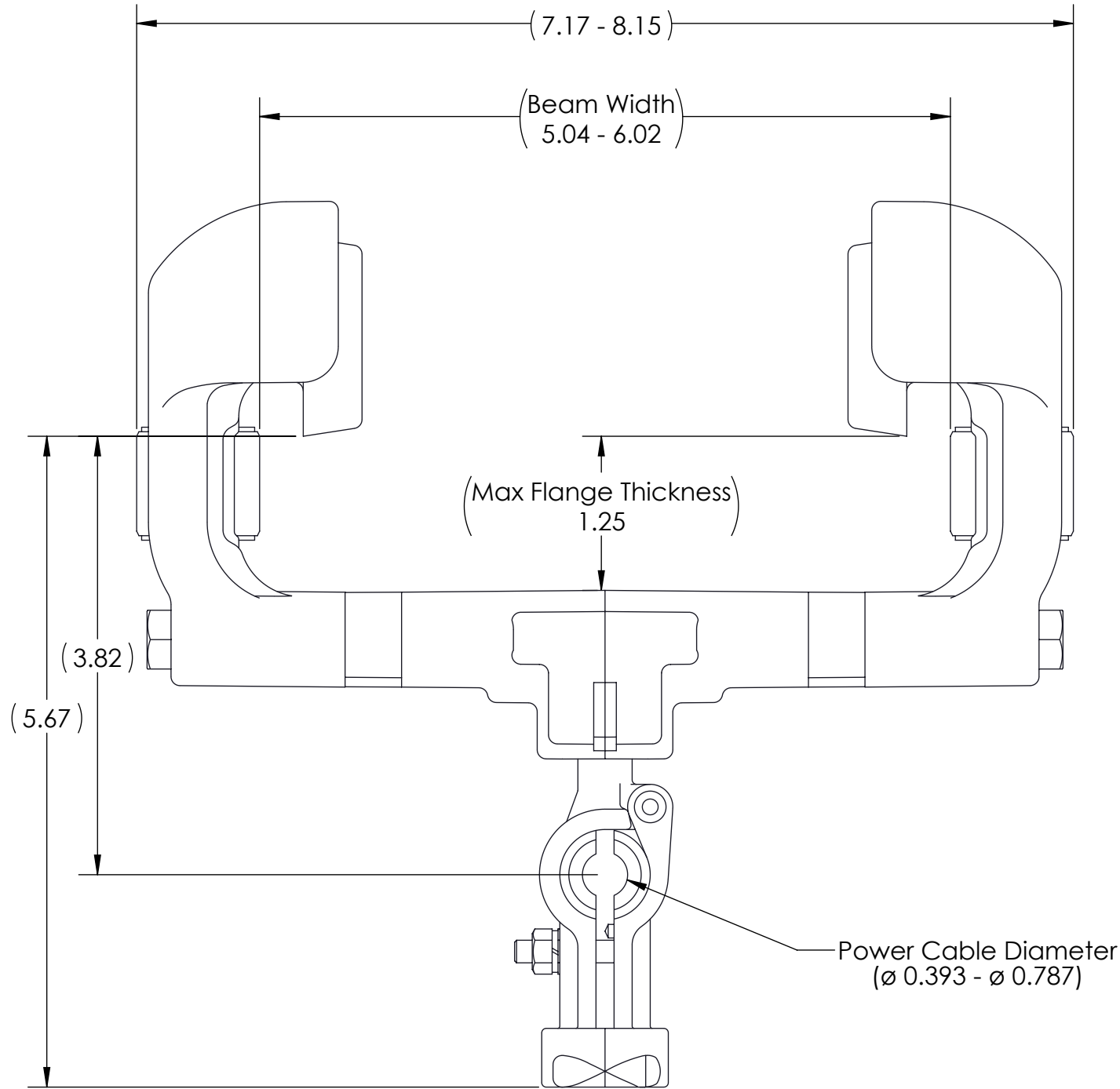
MIN BEAM CURVE RADIUS* = 78 3/4IN
 *ONLY WITH BEAM WIDTH 5.08IN TO 6.06IN



		VULCAN HOIST - PALAN 3435 CREMAZIE E. MONTREAL, QC H1Z 2J2 T. 514-728-4527 F. 514-374-4231 INFO@VULCANHOIST.COM WWW.VULCANHOIST.COM			
		PROJECT/PROJET			
TITLE/TITRE					
FESTOON BEAM TROLLEY					
SIZE/TAILLE	DRAWING NUMBER/NUMÉRO DE DESSIN				REV
B	ALIFESTOON-TR201				A
MATERIAL/MATÉRIEL		TOLERANCES			
		FRACTION	±1/64"	.X	±.02
		ANGLE	±.5°	.XX	±.01
		X	±.05	.XXX	±.005
		DRAWN BY DESSINÉ PAR	JF VALIN		
PROJECTION					
UNITS UNITÉS		IN/PO			
		INSPECTED BY INSPECTÉ PAR			
		APPROVED BY APPROUVÉ PAR			
THE INFORMATION CONTAINED IN THIS DRAWING IS THE SOLE PROPERTY OF VULCAN HOIST. ANY REPRODUCTION IN PART OR AS A WHOLE WITHOUT THE WRITTEN PERMISSION OF VULCAN HOIST IS PROHIBITED. L'INFORMATION SUR CE DESSIN EST LA PROPRIÉTÉ EXCLUSIVE DE VULCAN HOIST - PALAN. TOUTE REPRODUCTION DU DESSIN EN PARTIE OU DANS SON ENSEMBLE SANS LA PERMISSION ÉCRITE DE VULCAN HOIST - PALAN EST INTERDITE.					
DATE: 2022-06-10	SCALE/ÉCHELLE: 1:1	PAGE: 2 / 3			

MAX SUSPENSION LOAD = 15.4LB
 MAX TRAVELLING SPEED = 65FT/MIN
 TROLLEY INSTALLATION INTERVAL = 5FT

MIN BEAM CURVE RADIUS* = 78 3/4IN
 ONLY WITH BEAM WIDTH 5.04IN TO 6.02IN



VULCAN
 HOIST - PALAN

VULCAN HOIST - PALAN
 3435 CREMAZIE E.
 MONTREAL, QC H1Z 2J2
 T. 514-728-4527
 F. 514-374-4231
 INFO@VULCANHOIST.COM
 WWW.VULCANHOIST.COM

PROJECT/PROJET

TITLE/TITRE
FESTOON BEAM TROLLEY

SIZE/TAILLE	DRAWING NUMBER/NUMÉRO DE DESSIN	REV
B	ALIFESTOON-TR301	A

MATERIAL/MATÉRIEL	TOLERANCES
	FRACTION ±1/64" .X ±.02
	ANGLE ±.5° .XX ±.01
	X ±.05 .XXX ±.005
DRAWN BY DESSINÉ PAR	JF VALIN
PROJECTION	INSPECTED BY INSPECTÉ PAR
UNITS UNITÉS	APPROVED BY APPROUVÉ PAR

THE INFORMATION CONTAINED IN THIS DRAWING IS THE SOLE PROPERTY OF VULCAN HOIST. ANY REPRODUCTION IN PART OR AS A WHOLE WITHOUT THE WRITTEN PERMISSION OF VULCAN HOIST IS PROHIBITED.
 L'INFORMATION SUR CE DESSIN EST LA PROPRIÉTÉ EXCLUSIVE DE VULCAN HOIST - PALAN. TOUTE REPRODUCTION DU DESSIN EN PARTIE OU DANS SON ENSEMBLE SANS LA PERMISSION ÉCRITE DE VULCAN HOIST - PALAN EST INTERDITE.